

ALWAYS EVOLVING.

Robotized Inspection and Maintenance.

Thanks to its precision sensors, the Inspector gathers data with unprecedented versatility and objectivity, exceeding a human operator in many ways. It takes ultra-high-definition photos and videos, records sounds, detects gas leaks through thermography and oversees its environment with a 3D LIDAR scanner.

Benefits of deploying robots.



Ensuring the highest standards of HSE



Reducing emissions to the environment



Inspecting, gathering and analyzing data 24/7



Optimizing production costs & asset uptime



Inspection and maintenance expertise in collaboration with:



Specifications.

General

Dimensions	1070 x 600 x 720 mm
Weight	85,0 kg
Speed	0,5 m/sec (±10 %)
Long Arm	4 DOF 1640 mm height

Sensors

Camera	4x 2K for 360° view 1x 4K in arm
Navigation	3D LIDAR
Audio	Microphone
Optional	Thermal Camera Multi Gas Sensor Zoom Camera

Safety

ATEX	Zone 1
Rating	SIL2, PL-d On-board Safety Controller
Signaling	Safety light on the top of the sensor tower

Environment

Climate	-20° C to +60° C IP67
Surface	Grated Floors Concrete, Grass Gravel, Sand, Snow Ramps Stairs (up to 45°)

Battery

Running	240 min.
Charging <i>(in ATEX zone)</i>	20-80% in 45 min. 100% in 90 min.
Stand-by	340 min.

Site Requirements

Connection	4G or WiFi
Power	100 - 240 VAC 50/60 Hz max 6 A
Purging Gas	Nitrogen



Our other robots.

operator

A game-changing manipulation and inspection robot for the energy industry.



gasfinder

Reliable, specialized and fast to identify even the smallest methane leaks.



Taurob GmbH
Perfektastraße 57/7
1230 Vienna, Austria

+ 43 1 698 25 19
office@taurob.com
https://www.taurob.com



©2024 - All rights reserved
V4-Infold-aug.2024



inspector
V8

Advancing robotics. Saving lives.

THE WORLD'S TOUGHEST DATA GATHERING ROBOT.



Safety above all.



Thanks to its PL-D certified safety controller, the Inspector conforms with ATEX and safety of machinery standards for taking the risk out of personal, plant and environmental damages.

Everywhere. Every condition.



Built for the extreme, the Inspector serves dutifully in harsh industrial environments, explosive atmospheres, adverse weather conditions and all sorts of terrain.

Automated analytics.



The Inspector is able to interpret data in real-time using cloud or on-premise servers and its flexible API seamlessly connects directly to the client's digital twin, 3rd party analytics tools or fleet management solutions.

The Inspector's advantages.



Human-like perspective.

Long arm with 4 DOF to inspect Points of Interest designed for a human perspective.



High mission endurance.

4 hour mission runtime and full recharge in 90 minutes.



Tackling multiple floors.

Climbing and descending industrial stairs of up to 45° inclination.



High and low temperatures.

Carrying out missions in extreme temperatures (+60°C / -20°C).



Docking in ATEX zones.

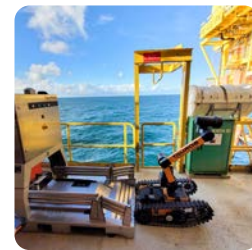
Autonomous docking, re-pressurizing and charging in ATEX zone 1.



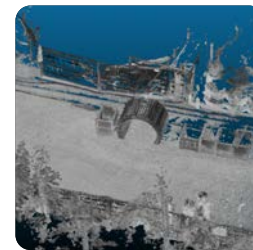
Ready and certified for explosive environment.



Operations on unmanned installations.



2D and 3D scanning, data cloud.



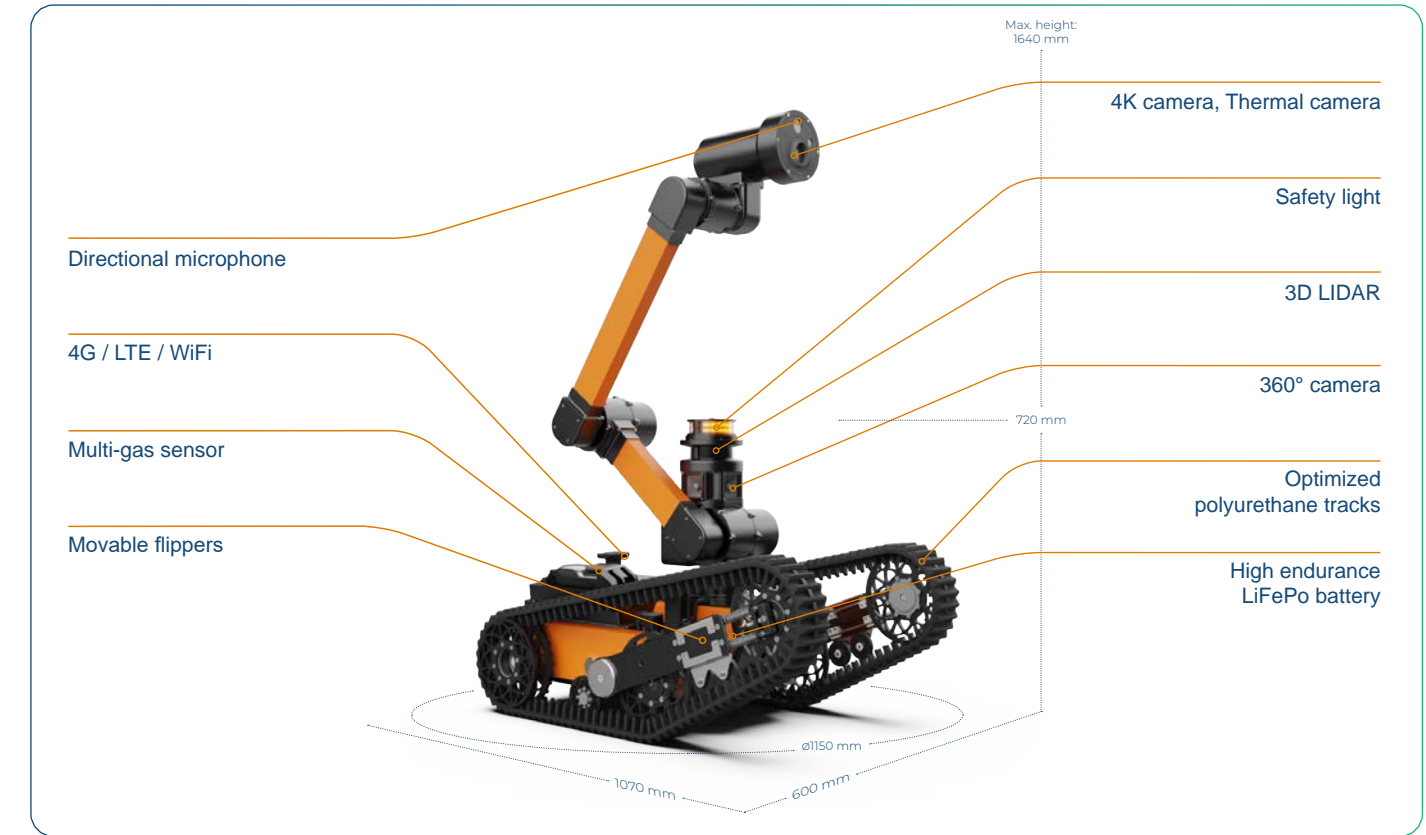
Gas leak, liquid and temperature detection.



High reliability & availability.



3rd party integration.



Teleoperation

First eyes on scene
Fast incident response
Manual inspection
Spill monitoring
Site surveying

Autonomous Inspection

Mapping and teach-in of POIs
Data gathering missions
Anomaly detection
Obstacle avoidance
Stair climbing

Data Acquisition

4K Photos / Videos
3D LIDAR scans
Audio clips
Thermography
Point clouds
Gas sensor data

Data Processing

In Cloud or on Edge
API for client system integration
3rd party apps: Dial Gauges, etc.
360° Photos / Videos

