



inspector

Robotic Inspection and Maintenance

THE WORLD'S MOST VERSATILE DATA COLLECTING ROBOT

Safety above all.

Thanks to its PL-D certified safety controller, the Inspector conforms with ATEX and IP67 standards for safety, minimizing the risk for personal, material and environmental damages.

Everywhere. Every condition.

Built for the extreme, the Inspector serves dutifully in harsh industrial environments, explosive atmospheres, adverse weather conditions and all sorts of terrain and marine environment.



Automated analytics.

The Inspector's software is able to interpret data in real-time using cloud or on-premise servers to optimize missions and goals. Its flexible API connects directly to a client's digital twin or seamlessly integrates 3rd party analytics tools.

Applications in many industries.



Oil and Gas



Power & Utilities



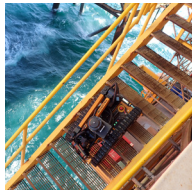
Chemical



Mining



Emergency
Response



DST BOT.

Reading dial gauges
and signaling anomalies



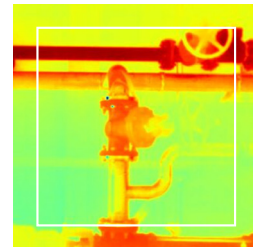
360° images
and video



Obstacle
detection



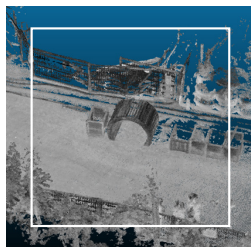
Gas leak, liquid
and temperature detection



Operations on unmanned
installations



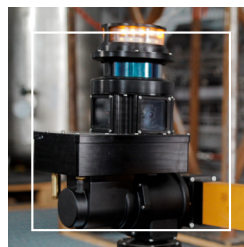
2D and 3D scanning,
data cloud



Stair climbing
up to 45°

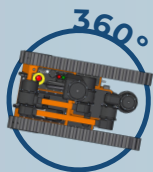


3D LIDAR
Scanner



Beyond any obstacle.

- Driving
- Patrolling
- Stair climbing
- 360° turning
- Movable arm
- LIDAR controlled
- Patented caterpillar tracks



All directions
(360°)



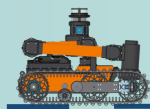
Stairs
(up to 45°)



Step
(25 cm)



Slope
(up to 45°)



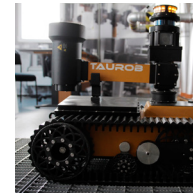
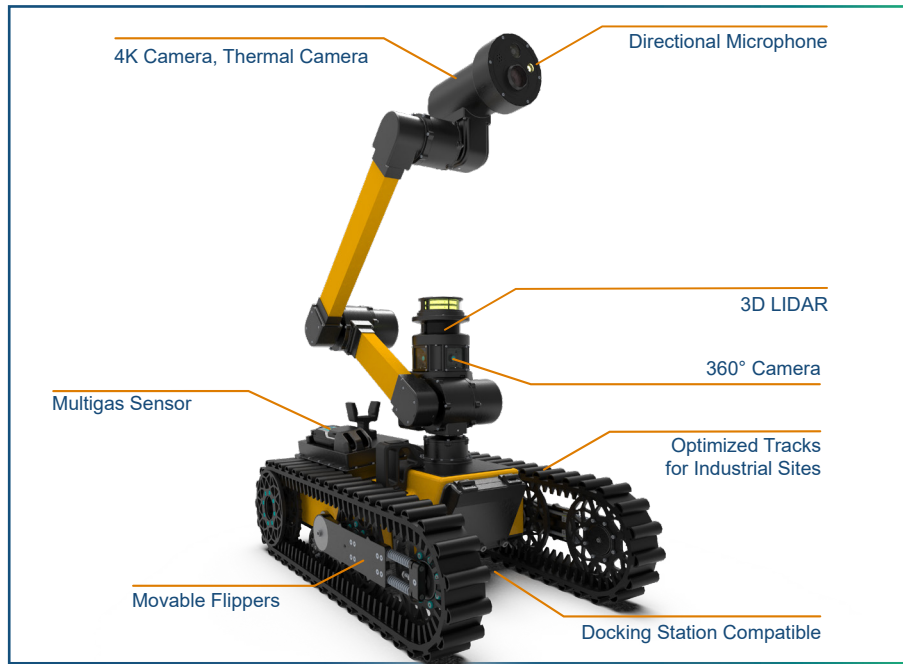
Gap
(25 cm)



Obstacle detection



Uneven terrain



Short Arm Version

For constraint spaces and applications.



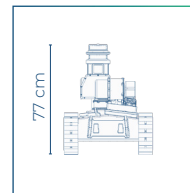
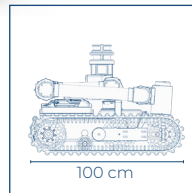
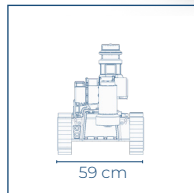
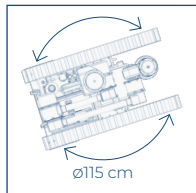
Docking Station

Stainless steel, charging and pressurization.



EasyDrive EasyMission

Remote mission settings via app over WiFi or 4G connection.



Tasks

- Routine inspection
- Gas leak detection
- Data gathering
- Location screening
- Signaling anomalies
- Alarm / first responder
- Emergency support

Applications

- Unmanned presence
- Working 24/7
- Dangerous (ATEX) environments
- Delegation in complex activities
- Remote operations (autonomous or teleoperated)
- Enhance safety performance
- Repetitive / monotonous actions
- Predictive maintenance

Take a
360° tour



ALWAYS EVOLVING.

Robotized Inspection and Maintenance.



Combined knowledge and data
analysis in collaboration with



Thanks to its precision sensors, the Inspector gathers data with unprecedented versatility and objectivity, exceeding a human operator in many ways. It takes ultra-high-definition photos and videos, records sounds, detects gas leaks through thermography and oversees its environment with a 3D LIDAR scanner.

Advantages of Deploying Robots.

Taking men
out of harm's
way & ensuring
the highest
standards of
HSE



Optimizing
production
costs & asset
uptime



Reducing
emissions
to the
environment



Inspecting,
gathering and
analyzing data
24/7



Specifications.

General

Dimensions	1000 x 594 x 766 mm
Weight	69,9 kg (short arm) 77,0 kg (long arm)
Speed	0,45 m/sec

Sensors

Camera	4x 2K for 360° view 1x 4K in arm Thermal Camera
Navigation	3D LIDAR
Audio	Microphone
Optional	Gas Finding Camera Zoom Camera Multi Gas Sensor

Safety

ATEX	Zone 1
Monitoring	SIL2, PL-D Onboard Safety Controller



Environment

Climate	-20° C to +60° C IP67
Surface	Grated Floors Concrete, Grass Gravel, Sand Ramps Stairs (up to 45°)

Arm

Short Arm	2 DOF 960 mm height
Long Arm	4 DOF 1640 mm height

Site Requirements

Connection	4G or WiFi
Power	100 - 240 VAC 50/60 Hz max 1.2 A
Purging Gas	Nitrogen

Battery

Running	2 h
Charging	11 h

Teleoperation

- First Eyes on Scene
- Fast Incident Response
- Manual Inspection
- Spill Monitoring
- Site Surveying

Autonomous Inspection

- Mapping and Teach-in of POIs
- Data Gathering Missions
- Anomaly Detection
- Obstacle Detection
- Level Change / Stair Climbing

Data Acquisition

- 4K Photos
- 4K Videos
- Audio Clips
- Thermography
- Point Clouds
- Gas Sensor Data

Data Processing

- In Cloud or on Edge (local server)
- API for Client System integration
- 3rd party apps: Dial Gauges, etc.
- 360° Videos
- Street-view

